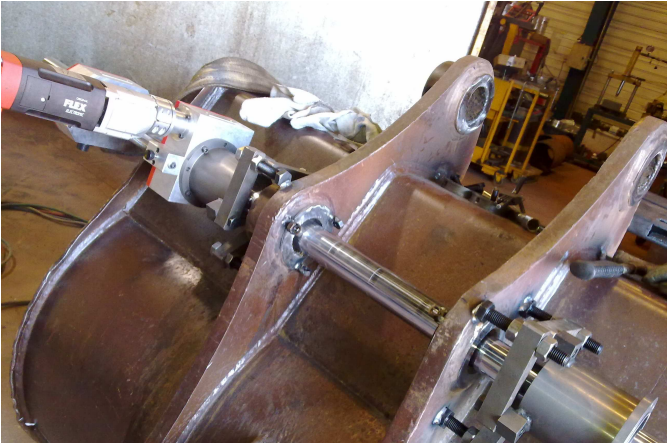


Portable Boring and Welding machine series FA60



Rotation: Electrical two ways motor including gear box for high torque value.

Bar diameter: Ø60

Bar standard length: 2 m

Overall machine weight (packaging): 90 Kg

Cutting tool type: carbide insert.

Machining:

Machining diameter: Ø65 to 400 mm

Bar rotation speed: from 0 to 145 RPM

Heavier part: 44 Kg (boring bar)

Feed bar motion: Mechanical in accordance with rotation. Reversible and adjustable from 0 to 0,2mm/rev.



*Optional: Facing attachment to machine thrust faces.
Pneumatic or hydraulic power drive.*

Welding :

Welding process: MIG/MAG

Welding diameter: Ø 65 to 400 mm

Overall machine weight: 30 Kg.

Standard shaft length: 1,4 m

Torch shaft diameter: Ø 30

Welding wire diameter: Ø 0,8

Feed bar motion: Mechanical in accordance with rotation. Adjustable from 0 to 4 mm/rev.



This process is fully automatic and used only one electrical motor for the rotation motion. The adjustable feed motion allows a 0 defect welding.

**Machining and welding kits could be sold separately.
The machine is delivered ready to use with complete centring kit, screws, welding torches, toll holders, carbide insert...**